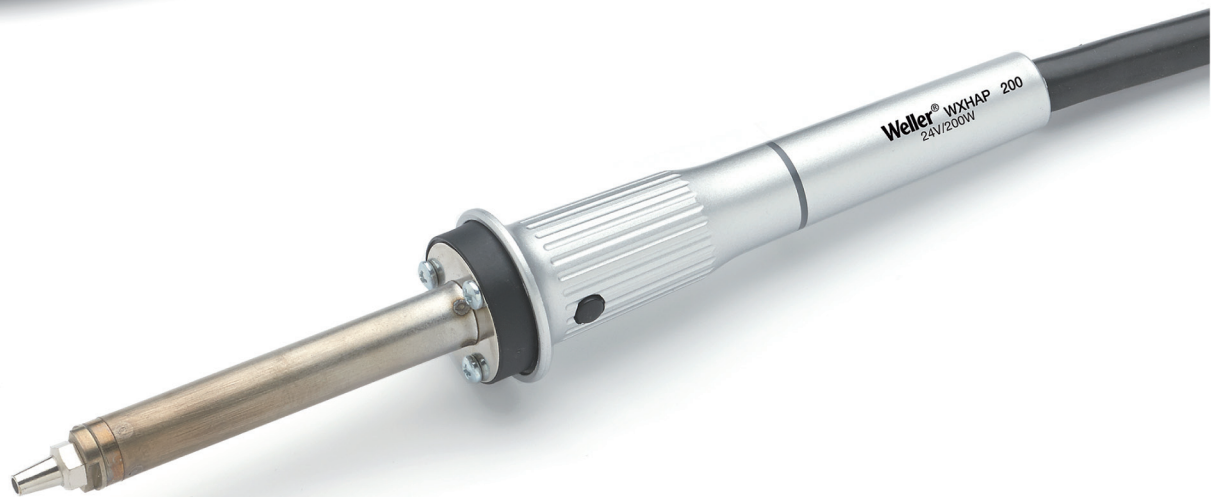
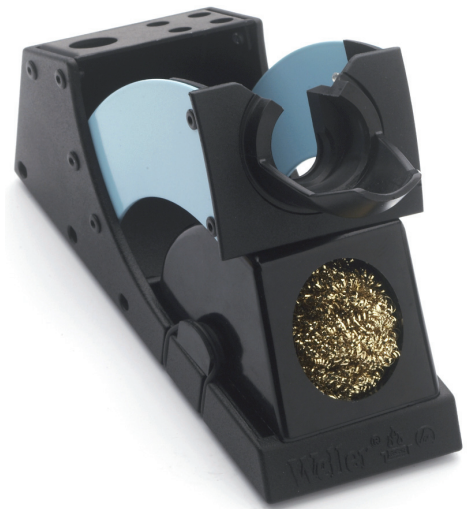
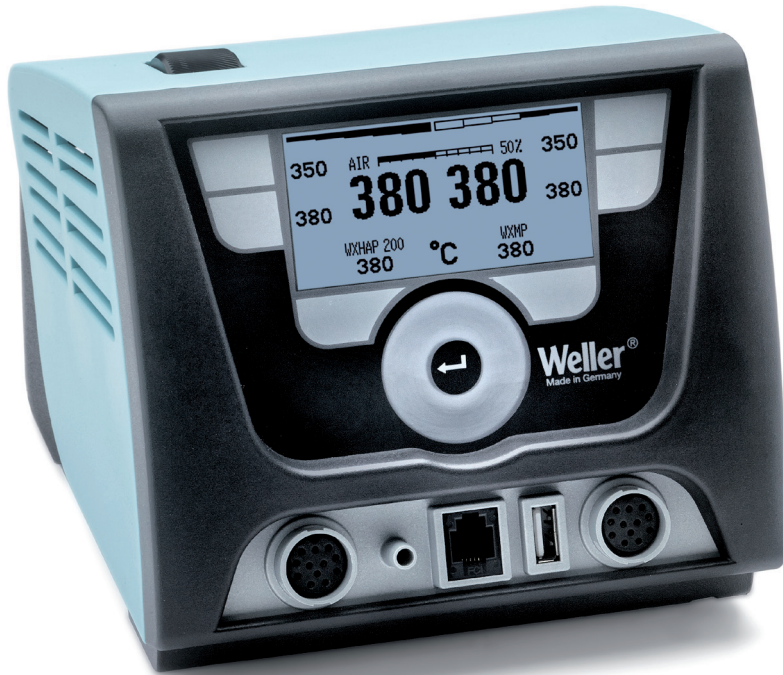


WXA 2010 Set

The new Weller® WX-Generation Hot-Air Set



WXA 2010 Set
T005 34 306 99

Weller® has the perfect solution for Hot Air and Soldering jobs!



Low cost of ownership!

Save 50 % of the investment costs, when compared to purchase of separate soldering and hot air stations. Hot air and soldering in one station.

Thumb wheel

Infinitely adjustable air delivery up-to 20 l/min max. Delivery rate displayed digitally. Maximum external air pressure 6 bar.



Easy to use

Touch screen, multilingual menu



The right tool for the job

Compatible tools for the multifunctional WXA 2 station: WXHAP 200, WXMT, WXP 200, WXP 120, WXP 65, WXSb 200, WXHP 120



Multi-purpose USB port

Firmware updates, parameter setting and data logging download to USB stick or PC.



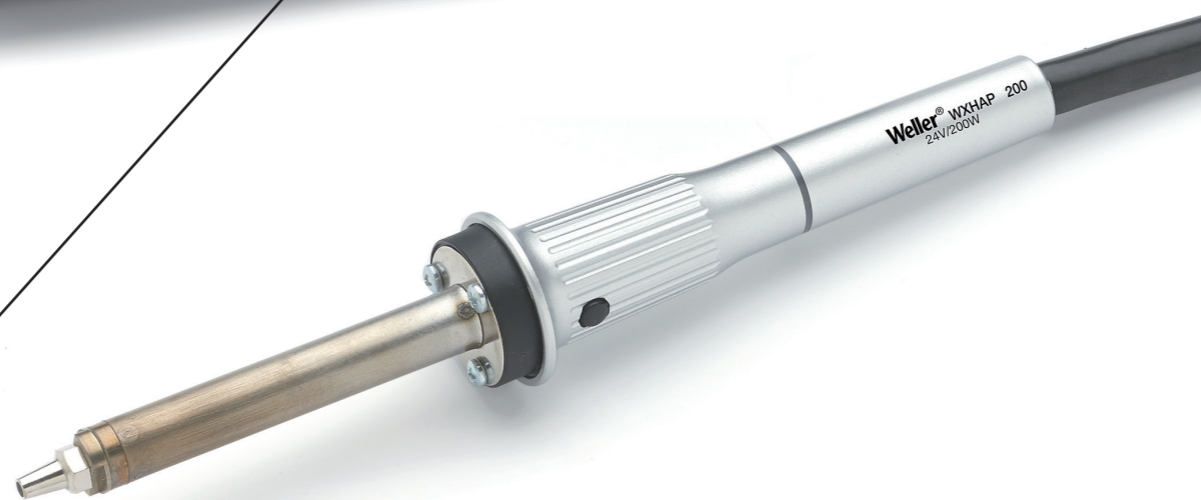
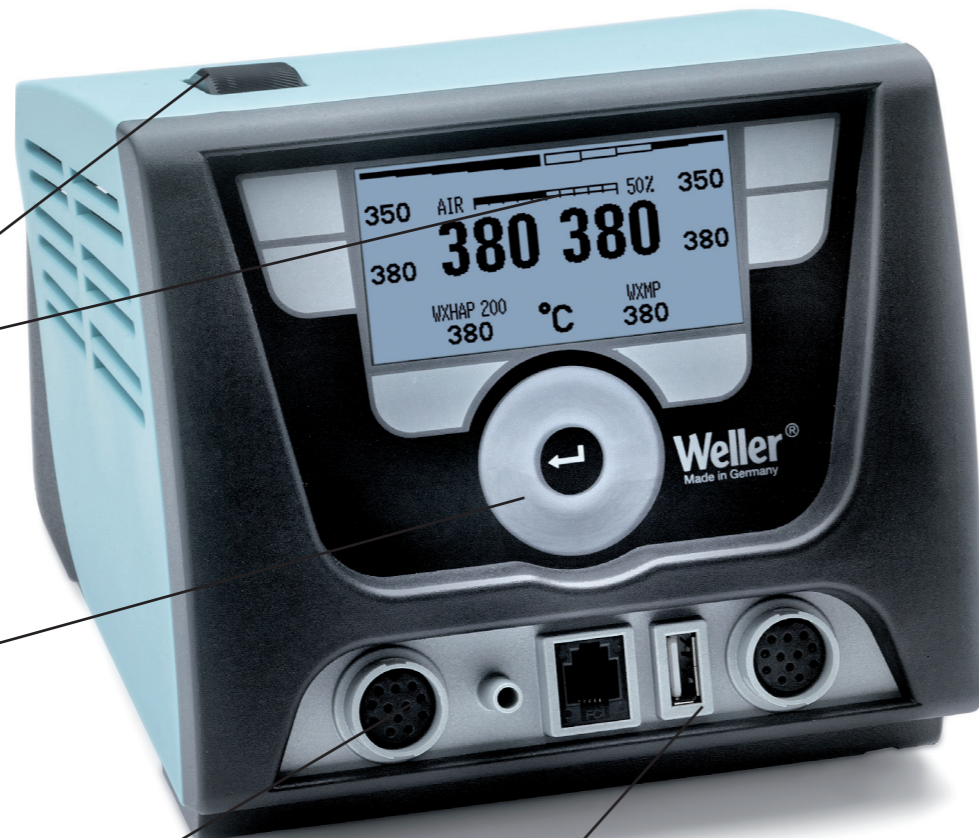
Maximum flexibility

A wide range hot air nozzles makes the WXHAP 200 a very versatile tool.



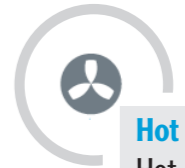
Ergonomic safety rest

WDH 30 safety rest for the Hot Air Iron WXHAP 200.



Truly Universal Station

Multiple tools can be connected



Hot Air

Hot Air Pencil
Inert gas possible



Soldering

Soldering Irons



Accessories

Soldering Bath / Preheating plate



Fume Extraction

Direct WXA control



ESD Safe


The WXA 2010 station meets all ESD requirements.

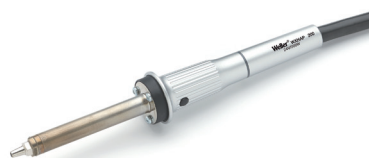


WXHAP 200 Hot Air Pencil

200 W, temperature controlled and ergonomic for comfort and exacting applications.



Technical Data:	WXA 2 Hot Air Station
	ESD safe, for applications in the EPA area.
Dimensions L x B x H	170 x 151 x 130 mm
Channels	2
Weight	approx. 3,8 kg
Voltage	230V
Power consumption	200 W (255 W)
Protection class	1
Fuse	T2A
Temperature range	50°C - 550° adjustable temperature range for different tools.
Temperature accuracy	Soldering +/- 9°C (+/- 17°F) Hot Air +/- 30°C (+/- 80°F)
Temperature stability soldering	+/- 2°C (+/- 4°F)
Display	L255 x 128 dots / backlighting
Multi-purpose USB port	Front mounted for firmware updates parameter setting and data downloads.
Air pressure	inlet pressure 400-600 kPa (58-87 psi) oilfree, dry compressed air pressure or nitrogen N2
Compressed air connection	compressed air hose outer diameter 6 mm (0,24")
Air flow rate	variable up-to 20l / min with 6 bar
Equipotential bonding	via 3.5 mm jack socket on the rear of control unit for earth free, soft ground or hard ground connection



Technical Data	WXHAP 200 Hot Air Pencil
Voltage	24V AC
Heater rating	200 W
Max. Air Flow Rate	20 l / min
Temperature range	100°C - 550°C (212°F - 932°F)
Protection class	3
Precision	+/- 30°C (+/- 80°F)
Hot air nozzle type	flat (Type F), round (Type R), dual (Type D), quad (Type Q)
Connectable to	WXA 2