



paraquda.

## RELENTLESS MULTIFUNCTIONAL PICK-AND-PLACE

Fast, Flexible, Adaptive & Modular



# paraquda.

## RELENTLESS MULTIFUNCTIONAL PICK-AND-PLACE

Introducing - The Paraquda - 3 in 1 multifunctional production center.



**CELL SOLUTION**

**LINE SOLUTION**

### combined process.

- Placing and Jetting in a single pass-through
- 2 to 4 P&P axis and/or 2 dispense/jetting heads

### productivity.

- Up to 8'200 - 12'300 cph per module
- Up to 100'000 dots/hour per module

### large feedercount.

- Up to 240 feeder lanes per module
- PCB size up to 600 x 430 mm (23.6 x 16.9")

### quick changeover.

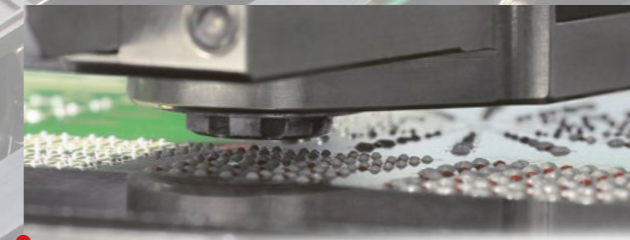
- Nonstop production, intelligent smart feeder
- Nonstop feeder and production changeover

### investment protection.

- Expandable in any direction
- All options retrofittable



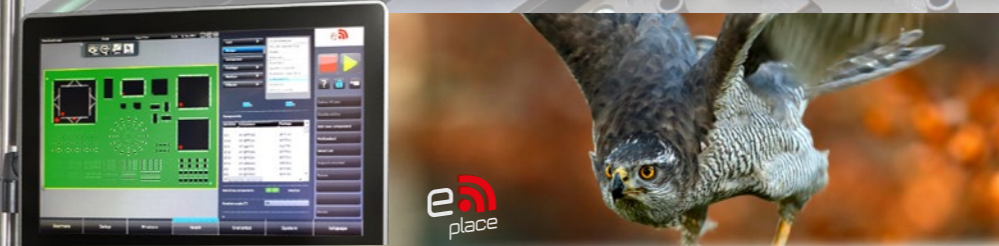
The Paraquda SMD pick-and-place system is designed for low/mid volume or NPI (new product introduction) high-mix productions. The Paraquda combines three different production steps within one machine platform (solder paste jetting and/or glue jetting and SMD assembly). With this unique combination, the multifunctional center offers unprecedented flexibility in your production environment.



The Paraquda has the ability to be equipped with a wide variety of dispensing valves for solder paste, adhesives or dam & fill materials. Prototypes are easily assembled without the need for stencils, reducing your turnaround time considerably. Expensive stepped stencils can also be eliminated with the dispensing of additional solder paste. It uses the same proven software as the Scorpion, and so delivers identical professional high speed dispensing solutions.



Multi flexible smart intelligent feeder, multi lane cassette or high accurate single lane feeder. Tape, Stick, Strip, Tray slider. Largest component spectrum; 01005 up to 80 x 70 mm, height up to 25 mm and fully integrated Traceability. Intelligent feeder system with barcoded set-up, allowing the changing feeders on-the-fly, combined with an impressive maximum of 240 feeder slots per machine, make this assembly system the ideal choice for low volume, high mix productions.



**MULTITALENT SOFTWARE AT YOUR FINGERTIPS** State of the art, full graphics, 21.5", 16:9 HD wide touch screen, fingertip operation, universal CAD conversion, zoom at camera windows, all-in-one job planning, setup optimisation, stock management, ERP/MES connection, data analysis, line management and more

### optional

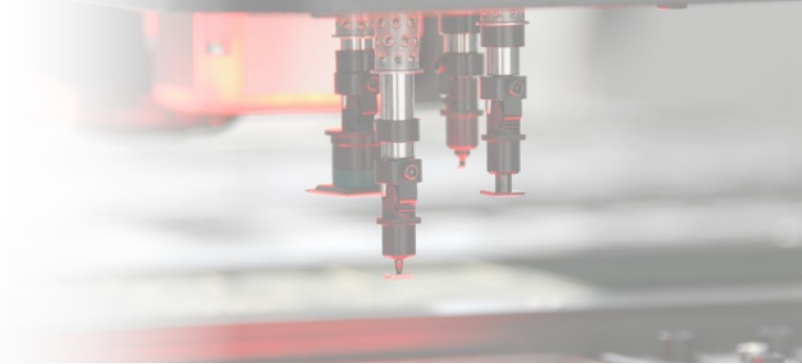
Laser Height Measurement Compensation of PCB warpage

Dispensing and Jetting Vacuum cleaning station for nozzles and tips

Tray Slider Unique system to increase the amount of trays

LED Longboard Conveyor Extensions to increase the processable PCB size

Additional: Electrical component test system, vision box to increase maximum component size, clean room cover and more



## CHOOSE YOUR PREFERENCES



		paraquda2	paraquda4	para-doble
Productivity	Optimum placement speed	8'200 cph (2-axes)	12'300 cph (4-axes)	24'600 cph (2x 4-axes)
	Optimum jetting speed	100'000 dots/h		
Feeder	Feeder capacity 8 mm tape	240 (200 inline)	240 (200 inline)	400 inline
Components	Component size range	01005 up to 40x40 mm (80x70 mm optional)		
Accuracy	Placement accuracy (x, y)	51 µm @ 3σ		
PCB	Max. PCB dimensions	600 x 430 mm (23.6 x 16.9")		
Dimensions	Machine footprint	1300 x 1450 mm (51.2 x 57.1")	3040 x 1450 mm (118.1 x 57.1")	



## FLEXIBLE SMT SOLUTIONS

### Essemtec AG

Mosenstrasse 20  
CH-6287 Aesch/LU  
Switzerland

Phone: +41 (0)41 919 60 60  
Fax: +41 (0)41 919 60 50  
Mail: info@essemtec.com

Wildlife consistently shows us with breathtaking flexibility how nature can adapt itself to the many different demands of its environment; that is what inspires us! Essemtec AG is a privately owned company with its development and production site in Switzerland. The product portfolio comprises of production equipment for electronic assembly and more. Our high tech solutions can be adjusted quickly and easily to meet wide ranging requirements; we are therefore able to respond to all manner of customer requests. That's why "naturally adaptive" is our motto across all ranges.

#### Disclaimer & Copyright:

The information contained in this brochure is for general information purposes only. For more information see the specification sheet. All materials contained in this brochure are copyright © Essemtec AG, Switzerland, May 2017

