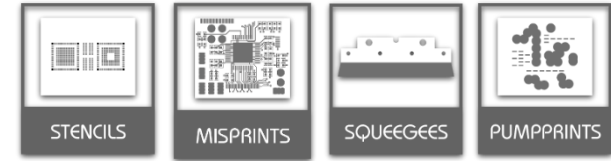
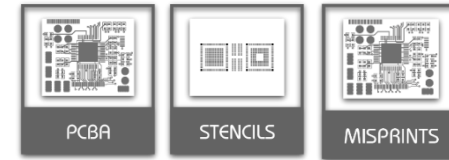




MiniSWASH II

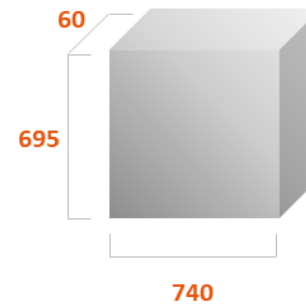


MiniSWASH III

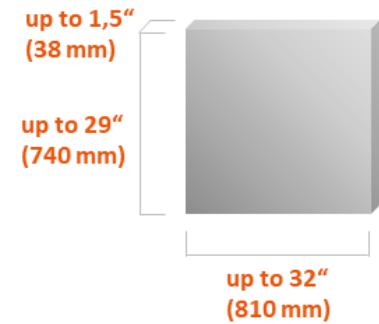


Usable space between the nozzles is 60 mm
(30 mm from axis to one and to second side)

Usable space
STANDARD CLAMPING



Usable space
FRAMED STENCILS



MiniSWASH II	Wash (Heat to 60 °C) + Rinse (Tap water or DI water) + Dry
MiniSWASH III	Wash (Heat to 60 °C) + Double Rinse (2x 25 L Carbon, 25 L Mixbed) + Dry

TECHNICAL PARAMETERS & PROCESS DATA

MiniSWASH II - OPEN RINSE

Machine dimensions WxLxH	1600 x 800 x 1200 (1 600) mm
Machine weight (without liquid)	250 kg
Usable chamber space WxLxH	810 x 60 x 740 mm
Usable space of standard clamping	740 x 60 x 695 mm
Stencils capacity / dimensions	1 pc / 584 - 813 mm (23"-32")
Max authorised load	15 kg
Process steps	3
Wash	20–60 °C (68–140 °F)
Rinse	tap water 20–40 °C (68–104 °F)
Dry	50–90 °C (122–194 °F)
Stencils typical total cycle time	15 - 30 min
Stencils typical quantity per hour	2 - 4 pcs
Stencils typical consumption / cycle (cleaning agent)	0.15 - 0.2 liter
PCB defluxing and Misprints - max usable area at the disposal	0.50 m ²
Max load in 3U–160 eurocards (100x160mm) per one cycle	24 pcs
Mechanical filtration (Wash)	20" 5 µm
Mechanical filtration (Rinse)	20", 1 µm
Wash tank volume max/min	62/34 l
Rinse tank volume max/min	32.5/22L (Open rinse)
Pressure on the nozzles with new filters (Wash)	2.7-3,0 bar
Flow with new filters (Wash)	~ 50 l/min
Pressure on the nozzles with new filters (Rinse)	2.7-3,0 bar
Flow with new filters (Rinse)	~ 50 l/min
Speed of rotary arms (motor powered)	12-15 n/min
Number of installed nozzles	52 (= 22+4+21+4)
Typical consumption of cleaning agent w/o load (per one cycle)	0.1 liter
Maximum power input	10 kW
Machine noise level	L _{req,T} <70 dB

TECHNICAL PARAMETERS & PROCESS DATA

MiniSWASH II - CLOSED LOOP

Machine dimensions WxLxH	1600 x 1400 x 1200 (1 600 mm)
Machine weight (without liquid)	350 kg
Usable chamber space WxLxH	810 x 60 x 740 mm
Usable space of standard clamping	740 x 60 x 695 mm
Stencils capacity / dimensions	1 pc / 584 - 813 mm (23"-32")
Max authorised load	15 kg
Process steps	3
Wash	20–60 °C (68–140 °F)
Rinse	DI water 20–40 °C (68–104 °F)
Dry	50–90 °C (122–194 °F)
Stencils typical total cycle time	15 - 30 min
Stencils typical quantity per hour	2 - 4 pcs
Stencils typical consumption / cycle (cleaning agent)	0.15 - 0.2 liter
PCB defluxing and Misprints - max usable area at the disposal	0.50 m ²
Max load in 3U–160 eurocards (100x160mm) per one cycle	24 pcs
Mechanical filtration (Wash)	20" 5 µm
Mechanical filtration (Rinse)	2x 20", 1 µm
Chemical filtration (Rinse)	Activated carbon, Mixbed
Wash tank volume max/min	62/34 l
Rinse tank volume max/min	39/22 l
Pressure on the nozzles with new filters (Wash)	2.7-3,0 bar
Flow with new filters (Wash)	~ 50 l/min
Pressure on the nozzles with new filters (Rinse)	1.7-2,0 bar
Flow with new filters (Rinse)	~ 40 l/min
Speed of rotary arms (motor powered)	12-15 n/min
Number of installed nozzles	52 (= 22+4+21+4)
Typical consumption of cleaning agent w/o load (per one cycle)	0.1 liter
Maximum power input	10kW
Machine noise level	L _{req,T} <70 dB

TECHNICAL PARAMETERS & PROCESS DATA

MiniSWASH III

Machine dimensions WxLxH	1600 x 1400 x 1200 (1 600 mm)
Machine weight (without liquid)	450 kg
Usable chamber space WxLxH	810 x 60 x 740 mm
Usable space of standard clamping	740 x 60 x 695 mm
Max authorised load	15 kg
Process steps	3
Wash	20–60 °C (68–140 °F)
Rinse	DI water 20–40 °C (68–104 °F)
Dry	50–90 °C (122–194 °F)
PCB defluxing and Misprints - max usable area at the disposal	0.50 m ²
Max load in 3U–160 eurocards (100x160mm) per one cycle	24 pcs
PCBA + Misprints 3U–160 eurocards (100x160mm) typical total cycle time	30 - 60 min
PCBA + Misprints 3U–160 eurocards (100x160mm) typical quantity per hour	24 - 48 pcs
PCBA + Misprints typical consumption/cycle (depends on PCB shape and pollution)	0.15 - 0.3 liter
Mechanical filtration (Wash)	20" 5 µm
Mechanical filtration (Rinse)	3x 20", 1 µm
Chemical filtration (Rinse)	2x Activated carbon, 2x Mixbed
Wash tank volume max/min	62/34 l
Rinse tank volume max/min	39/22 l
Pressure on the nozzles with new filters (Wash)	2.7-3,0 bar
Flow with new filters (Wash)	~ 50 l/min
Pressure on the nozzles with new filters (Rinse)	1.7-2,0 bar
Flow with new filters (Rinse)	~ 40 l/min
Speed of rotary arms (motor powered)	12-15 n/min
Number of installed nozzles	52 (= 22+4+21+4)
Typical consumption of cleaning agent w/o load (per one cycle)	0.1 liter
Max power input	10kW
Machine noise level	L _{teq,T} <70 dB

CONNECTION

Mains electricity	3x 400/230V, 50–60Hz 3x 120/208V, 60Hz (option) Protection: 3x B 32 A Connection: 3+N+PE (5–wire plug 32 A)
Compressed air	Pressure: 0.6–0.8 Mpa Class of air quality: 3.4.3. (according to ISO 8573–1) Connection: Hose SMC ø8 mm Flowrate: 150–200 m ³ /h
Air exhaust	Under–pressure: 50–80 Pa Connection: Hose ø100 mm Pressure: min. 0.2–5 bar
Water inlet (MiniSWASH II – open rinse):	Connection: G3/4" (outer thread)
Water outlet (MiniSWASH II – open rinse)	Connection: OD 40 x 3,7 mm Flowrate: max. 30 l/min
Water outlet (Drain pump)	Connection: Hose 5/4"

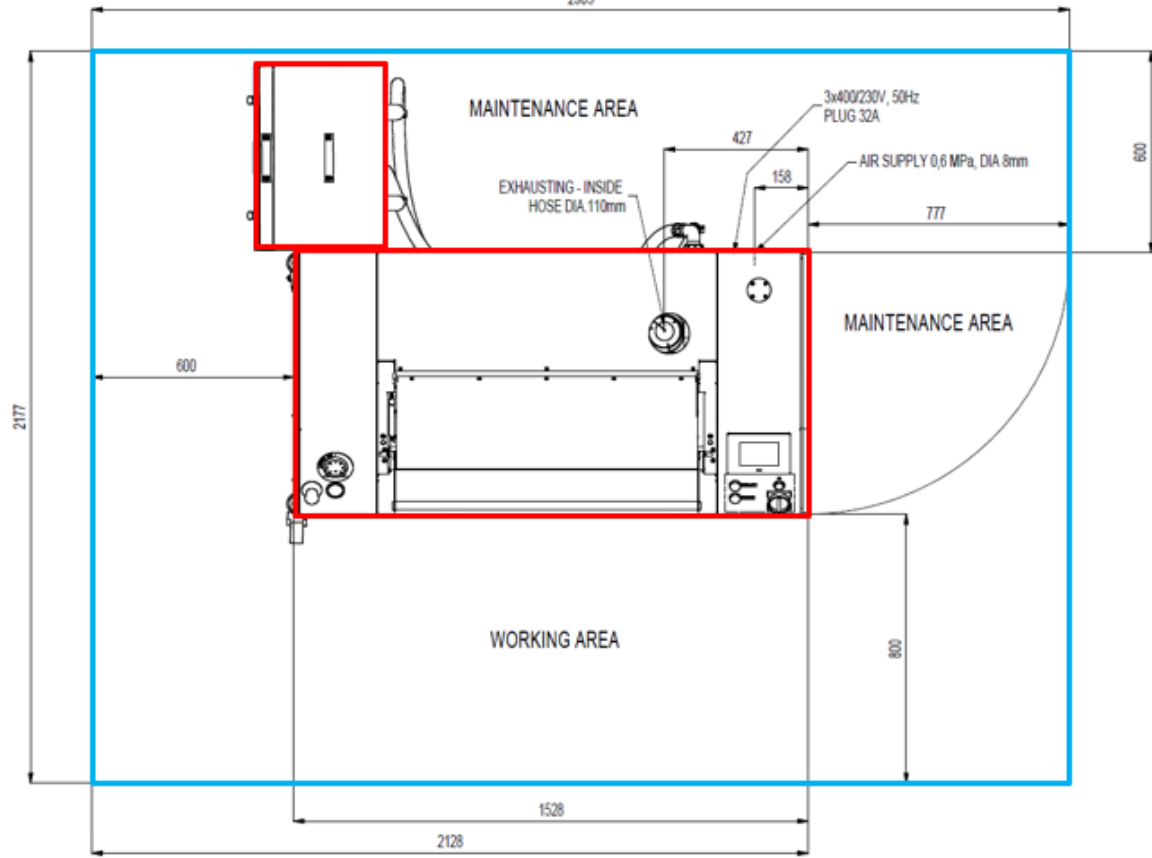
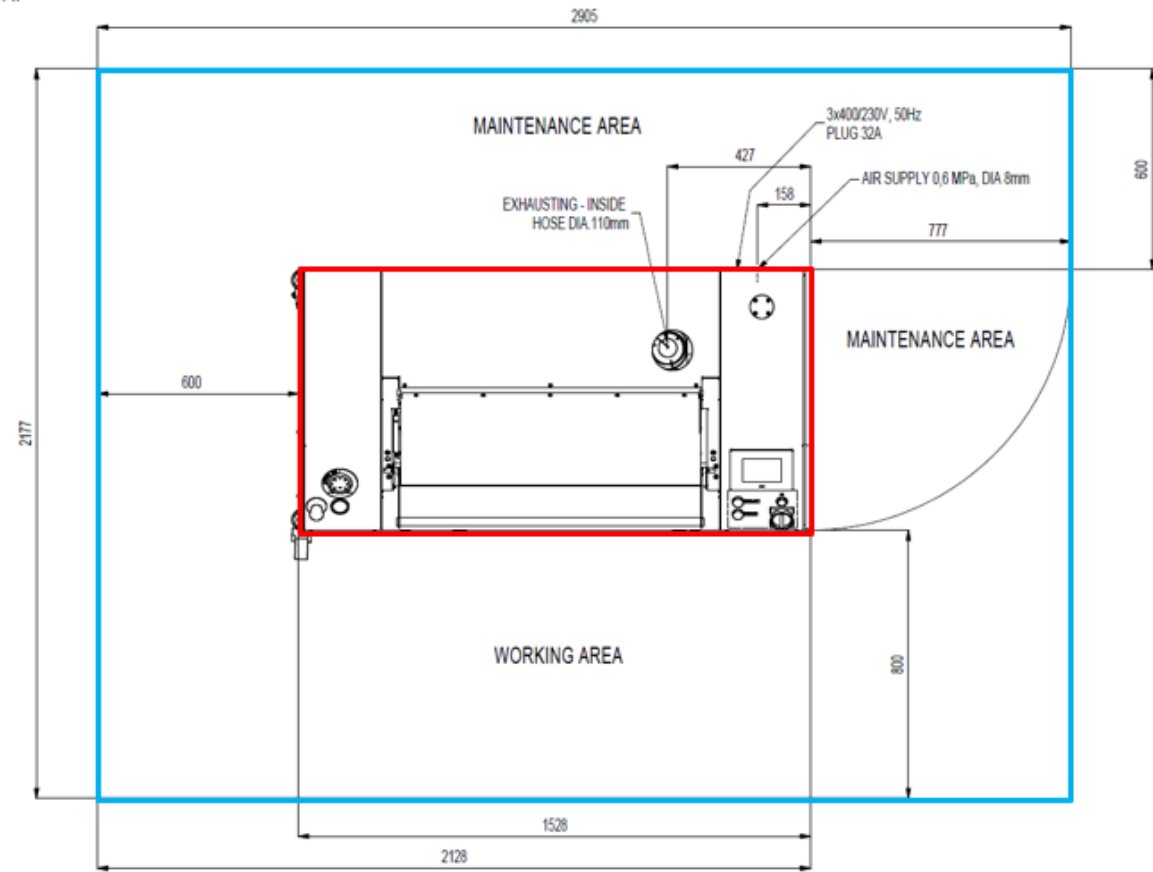
REQUIRED SPACE FOR MAINTENANCE

MiniSWASH II (Open Rinse)

MiniSWASH II (Closed Loop Rinse)

MINISWASH II

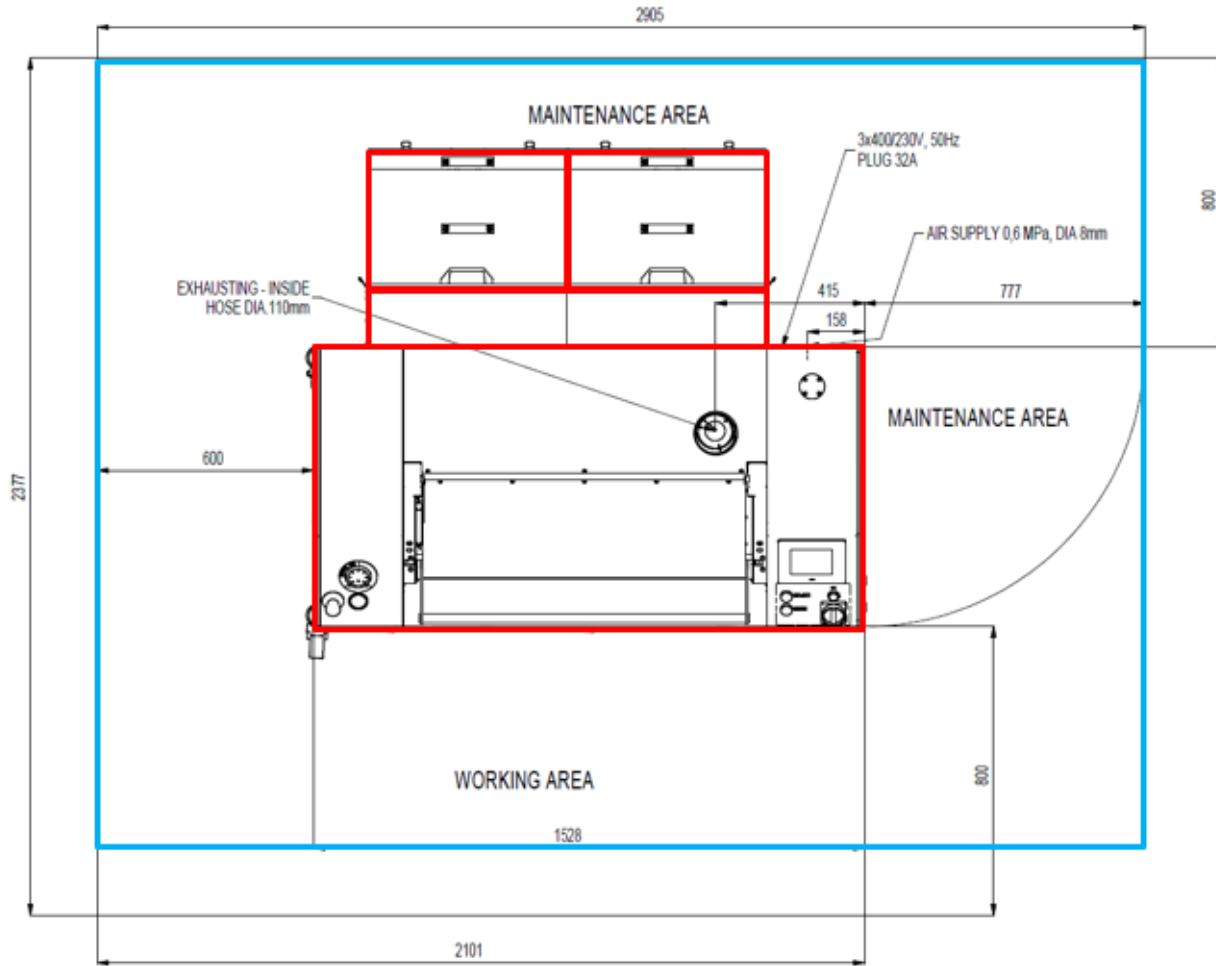
MINISWASH II



Note: The floor must be flat and in level!

REQUIRED SPACE FOR MAINTENANCE

MiniSWASH III



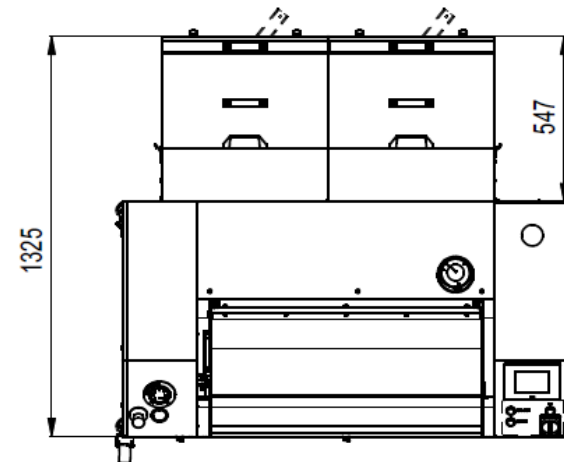
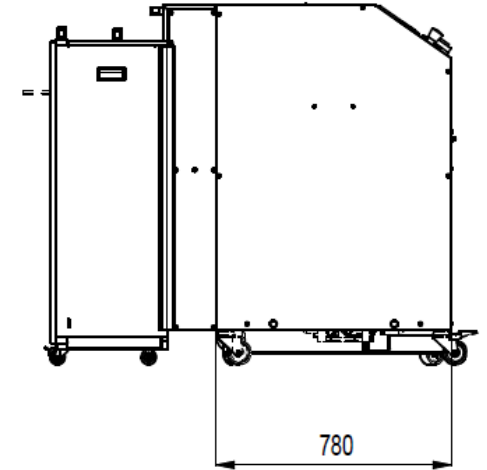
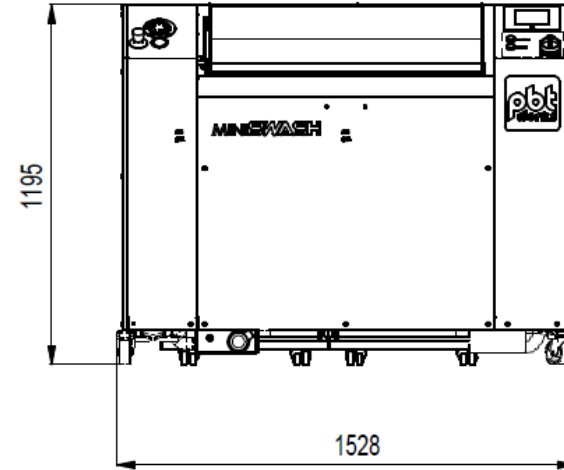
Note: The floor must be flat and in level!

DIMENSIONS

Machine height with the signal tower is about 345 mm higher, it is 1 540 mm.

Machine height with the exhaust ventilator is about 365 mm higher, it is 1 560 mm.

MiniSWASH III

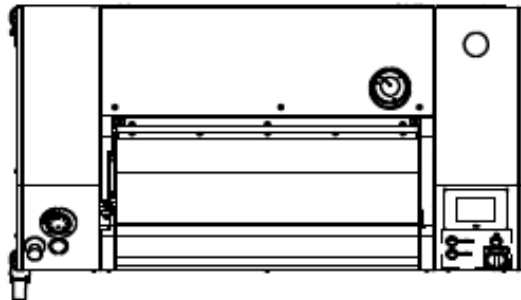
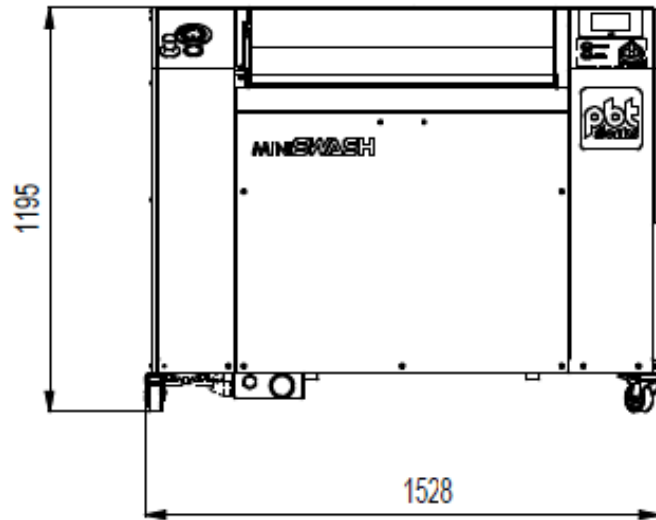


DIMENSIONS

Machine height with the signal tower is about 345 mm higher, it is 1 540 mm.

Machine height with the exhaust ventilator is about 365 mm higher, it is 1 560 mm.

MiniSWASH II (Open Rinse)



MiniSWASH II (Closed Loop Rinse)

