



TECHNICAL DATASHEET

ESD Protection Solutions

SKU: M200XXX (Refer to table)

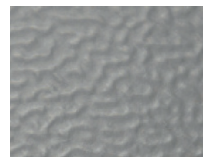
ESD 2 Layers Table Mats Textured Finish

A textured, 2-Layer ESD bench mat designed for use within EPA work-spaces. The surface of this bench mat is designed with a reflection breaking finish to reduce glare and improve operator comfort. The matting also provides protection against small collisions thanks to the forgiving nature of rubber.

FEATURES & BENEFITS:

- Reflection breaking surface
- Excellent friction coefficient
- Heat resistant: rubber does not melt or burn coming into contact with hot metal parts or soldering debris
- Resistant to chemical agents normally used for maintenance
- Oil resistance
- Suitable for loose laying: does not require application with adhesive
- Resistant to scratches
- Excellent flexibility and comfort
- Cut mats available on request
- European origin
- Available with studs

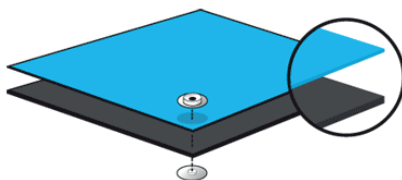
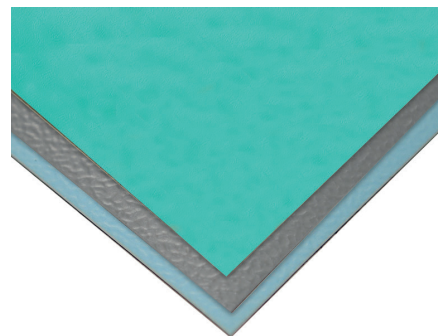
COLORS:



GREY



BLUE



Static Dissipative Layer

Conductive Layer



TECHNICAL DATASHEET

ESD Protection Solutions

GROUNDING :

Sufficient ground cords should be used to reliably meet EN 61340-5-1 Table 3, less than 1×10^9 ohms for working surfaces. Industry recommendation is that continuous runs of ESD matting should be grounded at 10ft intervals to allow proper charge decay rates. Each individual ESD mat should be grounded with ground snaps located no further than five feet from either end.

CLEANING:

Please note that contact between the matting surface and any acid or alkali solvent is strictly prohibited (such as Benzene, Alcohol etc), this will result in the antistatic performance degrading. If cleaning is required, the matting may be wiped with a cloth coated in a neutral solution (such as water).

GUIDANCE ON USE:

Matting materials have a tendency to shrink slightly when first unrolled. In applications where length is critical, allow the material to relax for at least 4 hours before cutting to size. Matting should always be

CUTTING TOLERANCES:

Width ± 6 mm

Length ± 6 mm every linear foot of running material



TECHNICAL DATASHEET

ESD Protection Solutions

PRODUCT CODE	DESCRIPTION
M2000B07	ESD MAT 600 X 1000 MM 2 X STUD 10MM BLUE
M2000B09	ESD MAT 600 X 900 MM 2 X STUD 10MM BLUE
M2000B12	ESD MAT 600 X 1200 MM 2 X STUD 10MM BLUE
M2000G07	ESD MAT 600 X 1000 MM 2 X STUD 10MM GREY
M2000G09	ESD MAT 600 X 900 MM 2 X STUD 10MM GREY
M2000G12	ESD MAT 600 X 1200 MM 2 X STUD 10MM GREY
M200B121	ESD MAT 1000 X 1200 MM 2 X STUD 10MM BLUE
M200G121	ESD MAT 1000 X 1200 MM 2 X STUD 10MM GREY
M300S120	ESD-TABLE MATTING ROLL 1.2 X 10 METER GREEN

