



Model: ED-268      20%RH, 252L



Totech (Toyo Living) is the creator of world's first Automatic Drying System invented in 1973.

Auto Dry cabinets use the highly-quality and highly reliable Toyo Living engine and has been sold over 700,000 units and used in over 10,000 companies around the world. We also supply various kinds of custom-build cabinet to best suit our client's need.

Features

- ❖ Modular design: Totech Auto Dry is modularly designed dry cabinet. The main modules include dry unit, shelves, castors, hygrometer. All of the modules can be replaced easily. Totech dry cabinet can be used as long as the cabinet structure is in good condition. Most of our customers can use the Totech dry cabinets for more than 10 years without any problem.
- ❖ Convenient Operation : ED-268 works automatically and continuously, and it is "plug and play" cabinet. Humidity is shown on hygrometer.
- ❖ Maintenance free design: Totech dry cabinet works by dry units. An interlocked fan causes the air to circulate through the dry unit, while passing through the dry unit moisture in the air is absorbed by the zeolite desiccant. During periodic regenerating of the zeolite desiccant by heating, the absorbed humidity is evaporated and exhausted through the external shutters of the dry unit. The process is physical, and no extra maintenance at all.
- ❖ Lockable doors: Every door can be locked separately with a key.

Applications

Auto Dry maintains preset internal humidity levels from 20~50% RH and is ideal for moisture proof storage applications for such items as:

- ❖ Micro-films and positive/negative films.
- ❖ Antiques and ancient documents.
- ❖ Electronic devices, PCBs and IC packages before removing from moisture barrier bags.
- ❖ Powered medicines.
- ❖ Micro-lens and microscope lens, etc.

ED-268 is engineered for long-term storage of 20%~50%RH. The circulation of air in the cabinet is regulated by an internal fan. Hygrometer is battery operated.

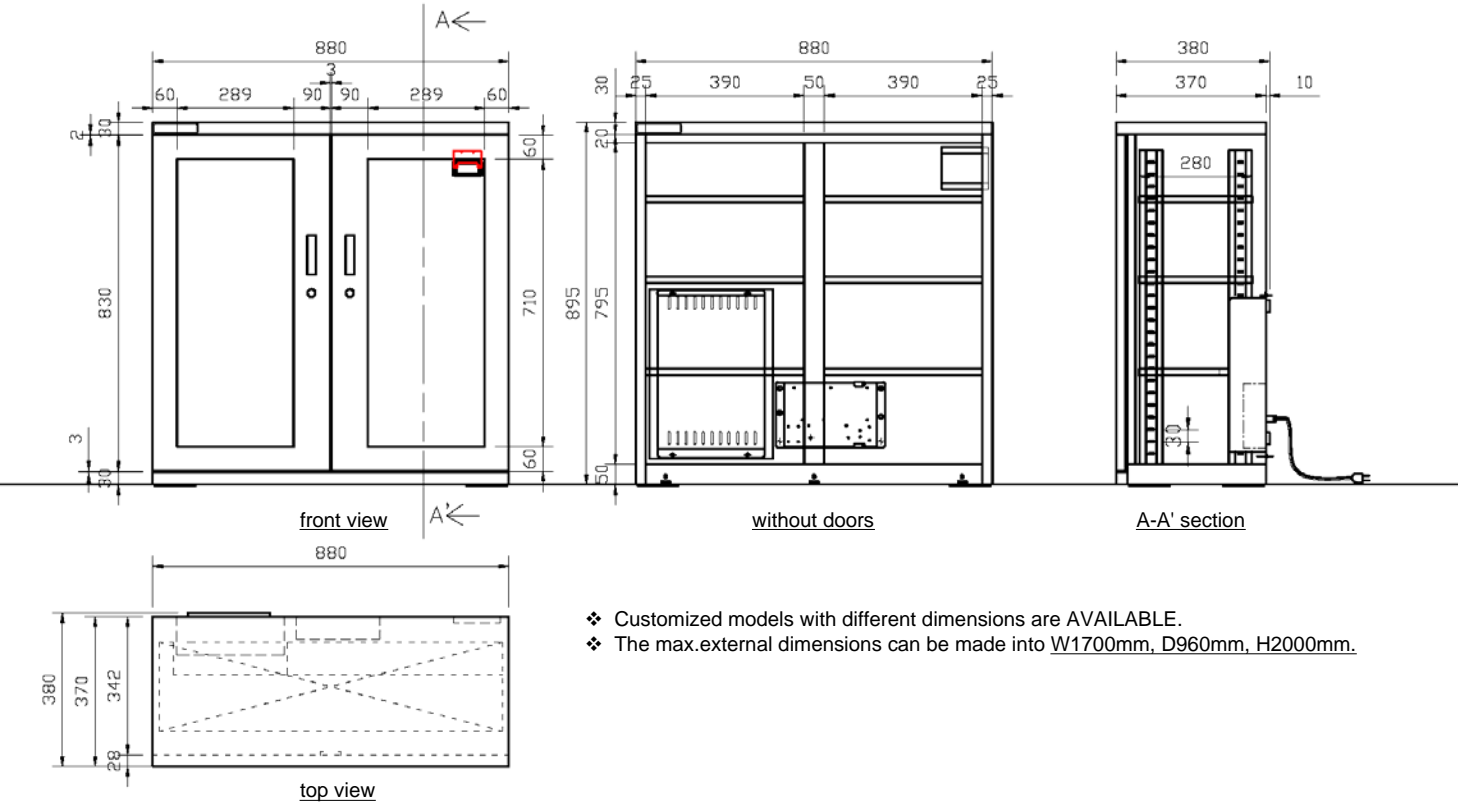
Specifications

Humidity Range	20% (20%~50%RH adjustable by dial)
Display of hygrometer	±5%RH
External dimensions	(W x H x D) 880 x 900 x 380 mm
Internal dimensions	(W x H x D) 870 x 830 x 330 mm
Weight	39 kg
Capacity	252 L
Shelves (W x D)	3 pcs, adjustable
Max weight on shelf	50 kg
Structure	1.2mm Steel
Cabinet color	Gray
Door	2 pcs, with handles, airtight magnetic sealers and glass.
Voltage	220 V AC (110 V AC optional)
Power consumption	Ave. 6.3W/h

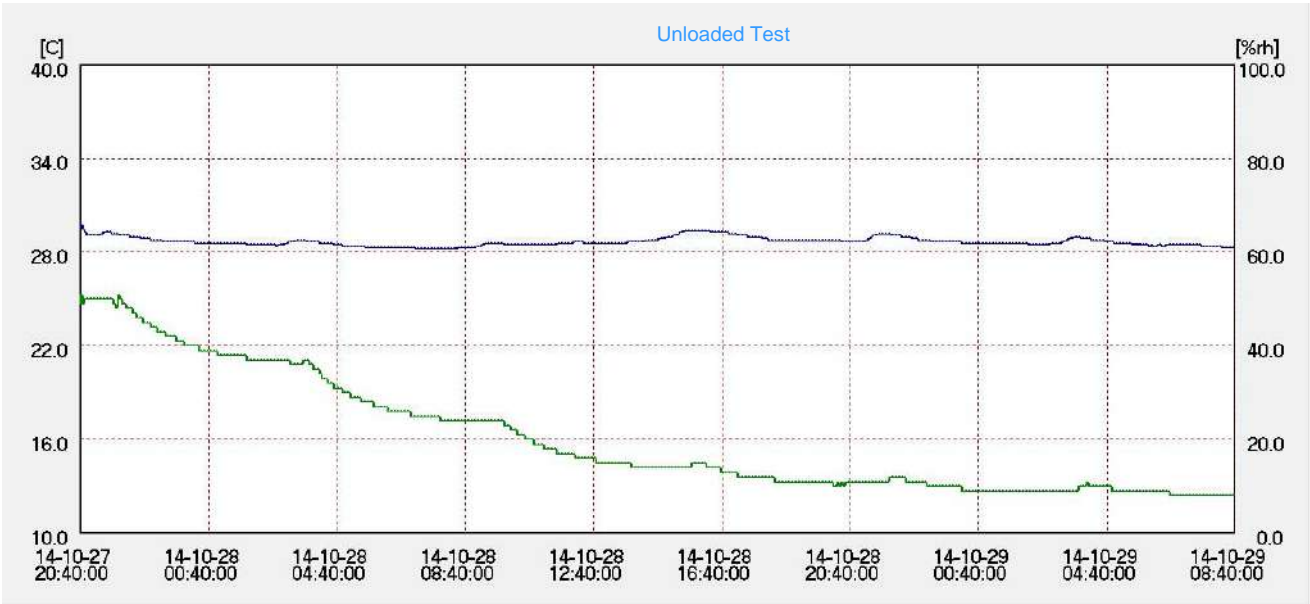


Model: ED-268      20%RH, 252L

Drawing of ED-268



- ❖ Customized models with different dimensions are AVAILABLE.
- ❖ The max.external dimensions can be made into W1700mm, D960mm, H2000mm.



- ❖ Condition: 2014.10.27 20:40 ~ 2014.10.29 08:40
- ❖ Instrument: CHINO Data logger, Model: MR6662. Accuracy rating:  $\pm 0.5^{\circ}\text{C}$ ,  $\pm 3\%\text{RH}$ .



Model: ED-268      20%RH, 252L

Hygrometer

❖ Display humidity and temperature value



Available options



❖Extra shelf

Greatly increase the usable space inside Super Dry



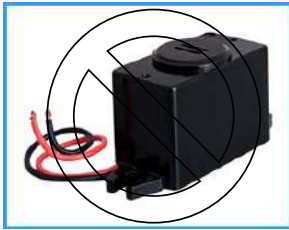
❖SMD single rack (stainless steel)

Suitable for storage of components on tape and reel, can pull out on rail



❖SMD double rack (stainless steel)

Suitable for storage of components on tape and reel, can pull out on rail



❖Humidity/ Door open alarm buzzer

Alarm buzzer sounds when its internal humidity/ door open time exceeds set value



❖Humidity alarm light

Alarm light flashes and sounds when its internal humidity exceeds set value



❖Independent Nitrogen purge system (Model TN2-02)

Effective usage of N<sub>2</sub> combined with Super Dry, help to accelerate the recovery time and oxidation prevention. Set the buttons on N<sub>2</sub> purge system itself



❖Nitrogen valve (Model: HN2-01)

Simple N<sub>2</sub> flow meter 0-25L/min adjustable



❖Nitrogen auto purge system (Model AN2-03)

Effective usage of N<sub>2</sub> combined with Super Dry, help to accelerate the recovery time and oxidation prevention. Set on digital control panel



❖Adjustable legs

Available for effective stabilization



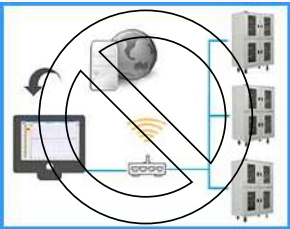
❖Wrist strap connection

Allows grounding while handling ESD sensitive materials



❖Data logger with software (model MR6662)

Data logging humidity and temperature, can read and output data by software with a PC



❖Network system for humidity and temperature (including module and software)

Far distance humidity and temperature monitoring



ESD safe function



❖Castors(4 pcs)

To move the cabinet on floor easily